



# PRO WAVE

Perfect Resource-Optimised Bin

# PRO Wave

## Perfect Resource-Optimised Bin

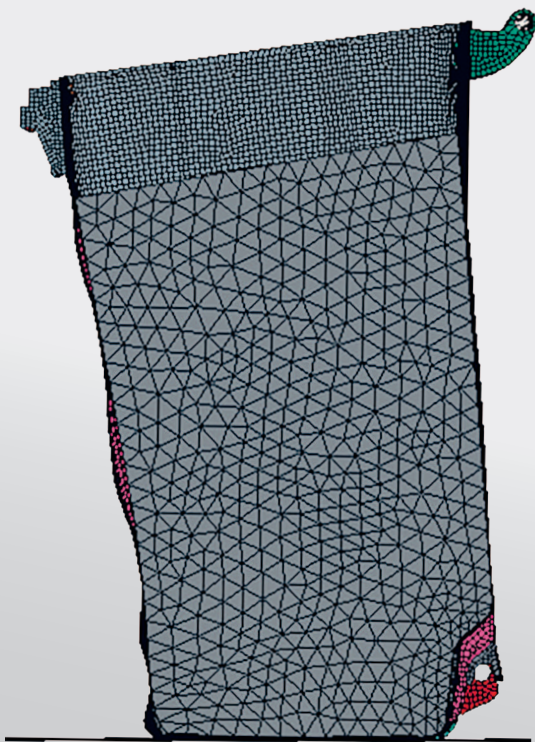
- Made of High Density Polyethylene, HDPE
- Resource optimised containers for waste and recycling materials in the patented Wave design
- State of the art production methods using minimum raw materials
- Ergonomic handling
- High stability



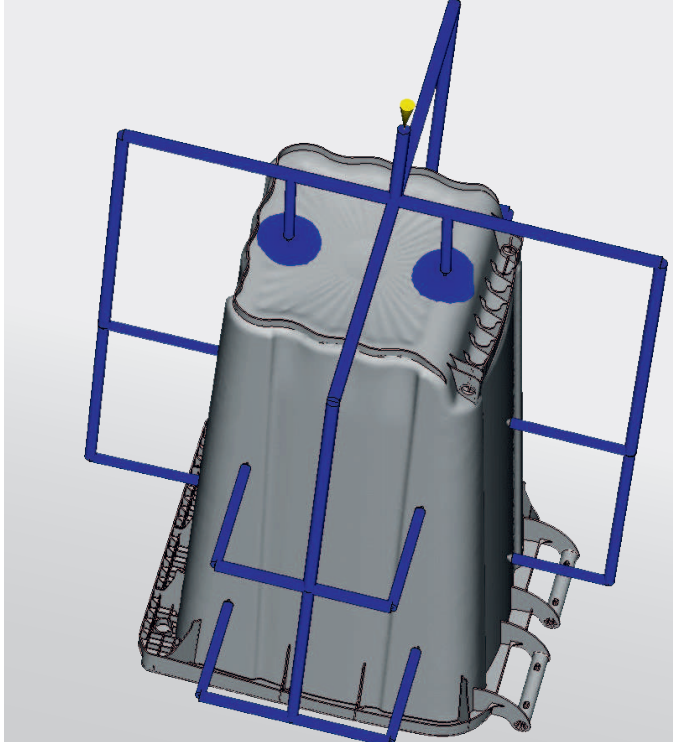
PRO Wave 240 l, 120 l, 80 l

## Technology and Innovation

- The latest production methods and state of the art injection moulding machines enable production of pioneering innovative products.
- The manufacturing methods and machinery have made it possible to produce one of the lightest two wheeled containers on the market.
- Despite the low body weight, the container has high stability caused due to the production process.
- The innovative multiple injection system used in the production process enables injection of the plastic material at significantly more points of the container tool, providing a reduced wall thickness with even and stress free material distribution.



Computer simulation of drop test



Innovative multi injection frame

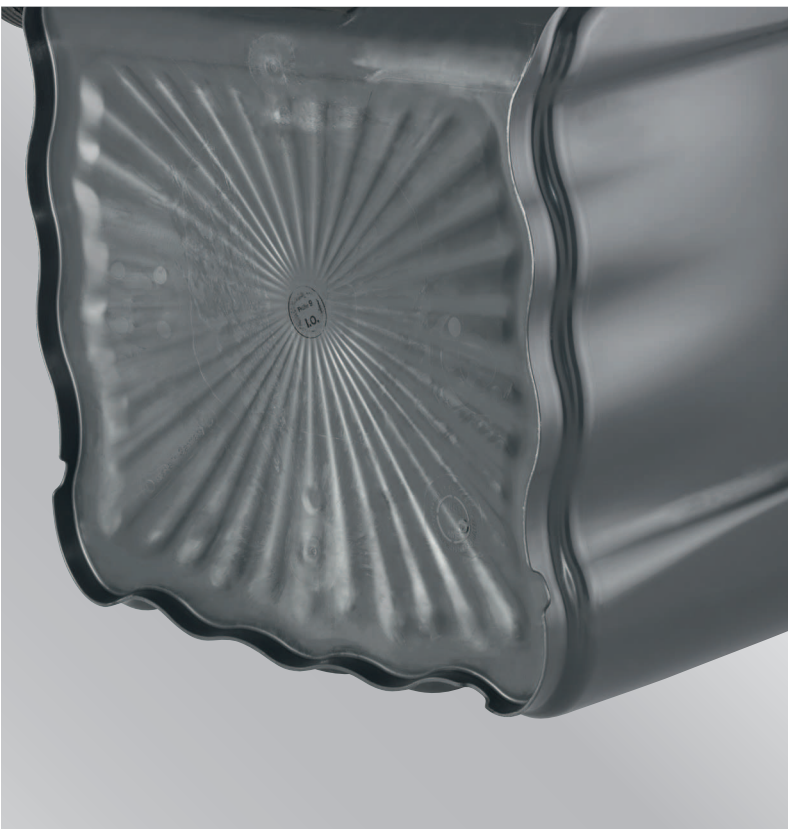


## Protection of Resources

- The sustainable business strategy is protection of the environment, resource conservation and reduction of CO<sub>2</sub> emissions.
- The focus is on environmentally friendly production ensuring our products have the lowest possible environmental impact of our products.
- An optimized production is achieved by using reground material from end of life containers.
- The most efficient conservation of resources is to keep the input of raw materials to an absolute minimum as demonstrated by the exemplary success of the PRO Wave.

## Design and Ergonomics

- High stability and unique Wave look
- Optimum handling with the ergonomic concept
- Practical foothold as well as low bin weight
- The low weight of the bins protects collection operatives health and increases efficiency and sustainability
- The reduced weight on the lifting gear decreases the fuel consumption of the vehicle as well as the wear and tear on the lifter.





# PRO Wave

80 – 240 litres

- Available in 80 l, 120 l und 240 l
- Made of High Density Polyethylene, HDPE
- UV-stabilised
- Ergonomic design of the lid handles
- Lid with all-round drip rib for condensation water
- Manufactured according to DIN EN 840 – 1, 5 und 6
- RAL quality tested
- Axles from hardened and tempered steel
- Integrated chip-nest for transponder
- External gear for high stability
- Cushioning of the impact by the open lid on the body according to EU directive 2000/14/EG





**Perfect Optimisation Of Resources**

- Optimised use of raw materials
- Highest quality materials
- Reduced CO<sub>2</sub> emissions
- Ustainable production processes with the latest technology
- Innovative new generation of tooling with multi point injection
  - ◆ Latest injection moulding machines

**Economics**

- High stacking for cost-effective transports
- Space saving storage
- Low bin weight
  - ◆ Less wear and fuel consumption for the collection vehicle
  - ◆ Protection of health
  - ◆ Promotes productivity
  - ◆ Ergonomic handling

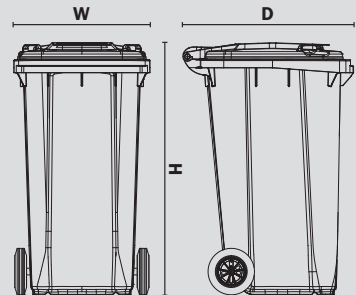
**Proven SSI Schaefer Quality**

- RAL quality tested
- Increased container strength
  - ◆ Special base design
  - ◆ Continous wave contour
  - ◆ Fully profiled side walls
- Stress free material distribution
- Robust stacking supports



Container	Pro 80 Wave	Pro 120 Wave	Pro 240 Wave
Width mm (W)	448 ± 5	480 ± 5	585
Height mm (H)	932 max.	1,005 max.	1,100 max.
Depth mm (D)	514 max.	555 max.	740 max.
Nominal volume l	80 + 18/-5	120 + 8/-6	240 - 15/-5
Payload kg	40	48	96
Wheel - Ø mm	200	200	200

All dimensions are nominal in accordance with DIN EN 840.



**Standard bin colours**

Black grey RAL 7021	Red RAL-Design 040 40 67	Rape yellow RAL 1021	Pale brown RAL 8025	Green RAL-Design 150 40 20 (140 40 20)	Blue RAL-Design 270 40 40
------------------------	-----------------------------	-------------------------	------------------------	---	------------------------------



Continous handle tube with 2-point hinges



Strong 4-point hinges



Integrated footstep

